

46/33

A PLANNED UNIT DEVELOPMENT IN CYPRESS LAKES CYPRESS LAKES - PLAT NO. 7-A

SECTION 14, TOWNSHIP 43 SOUTH, RANGE 42 EAST

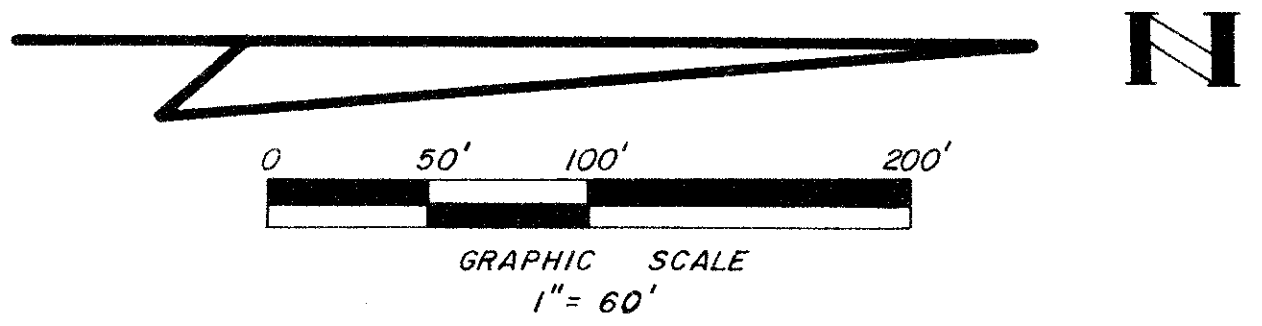
PALM BEACH COUNTY, FLORIDA

IN 3 SHEETS SHEET NO. 3

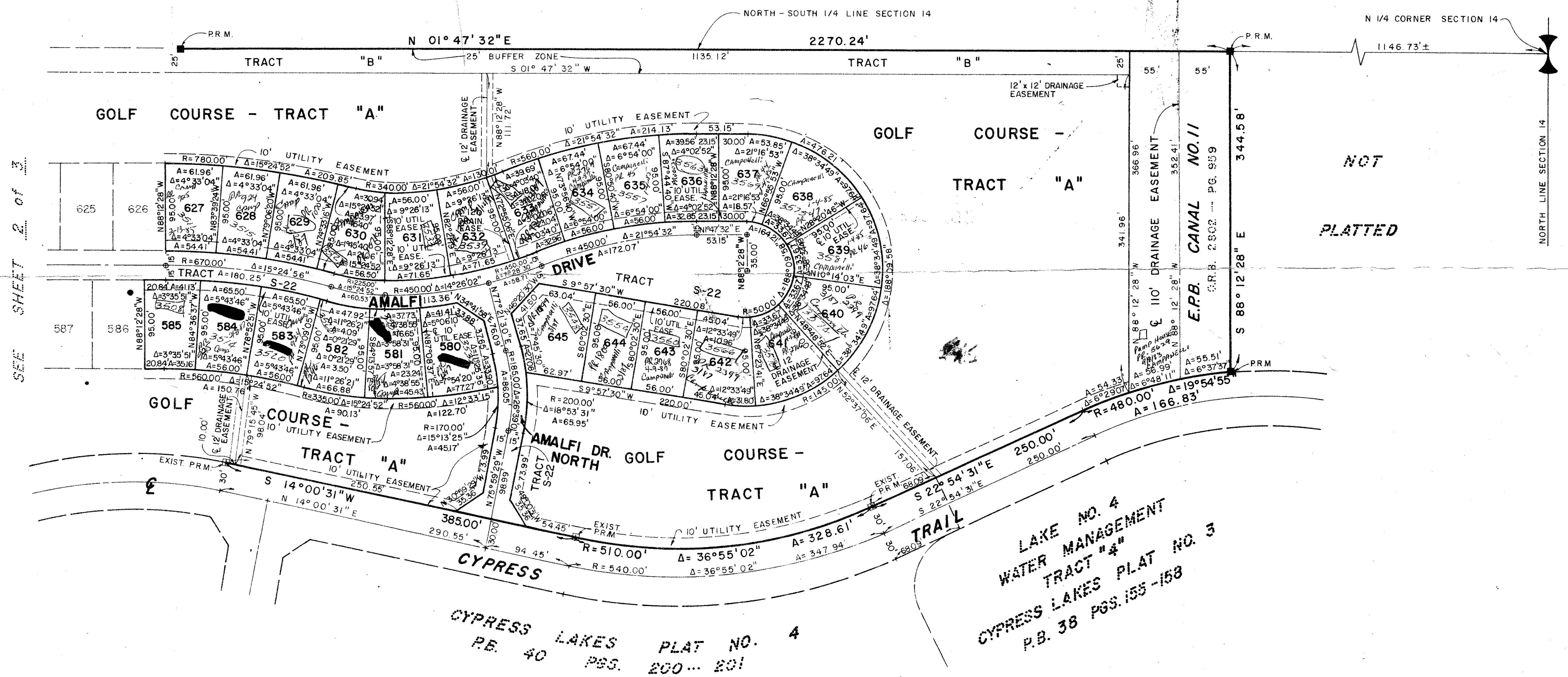
JANUARY, 1983

33

STATE OF FLORIDA }
COUNTY OF PALM BEACH }
This Plat was filed for record at _____ M.
this _____ day of _____
19 _____, and duly recorded in Plat Book No. _____
on page _____
JOHN B. DUNKLE, Clerk Circuit Court
By _____, D.C.



NOT PLATTED



SEE SHEET 2 OF 3

CYPRESS LAKES PLAT NO. 4
P.B. 40 PGS. 200-201

LAKE NO. 4
WATER MANAGEMENT
TRACT "4"
CYPRESS LAKES PLAT NO. 3
P.B. 38 PGS. 155-158

THIS INSTRUMENT WAS PREPARED BY JOSEPH M. TUCKER IN THE OFFICES OF ROSSI AND MALAVASI ENGINEERS, INC., 1675 PALM BEACH LAKES BOULEVARD, WEST PALM BEACH, FLORIDA, 33401 PHONE: 737-6546.

SUBDIVISION #	14-042
BOOK #	PAGE #
FLOOD ZONE #	FLOOD MAP #
QUAD #	ZONING #
EE	ZIP CODE 33406
PUD NAME	Cypress Lakes

46/33 0234-003

ROSSI AND MALAVASI ENGINEERS, INC.
WEST PALM BEACH, FLORIDA

CYPRESS LAKES-PLAT NO. 7-A
IN 3 SHEETS SHEET NO. 3

Date	JANUARY, 1983	Designed	R. ANDERSON	Scale	1" = 60'	Sheet	
Approved		Drawn	C. GOSS	Job No.	2542-82		
		Checked		File No.	S-1271-00		3 of 3